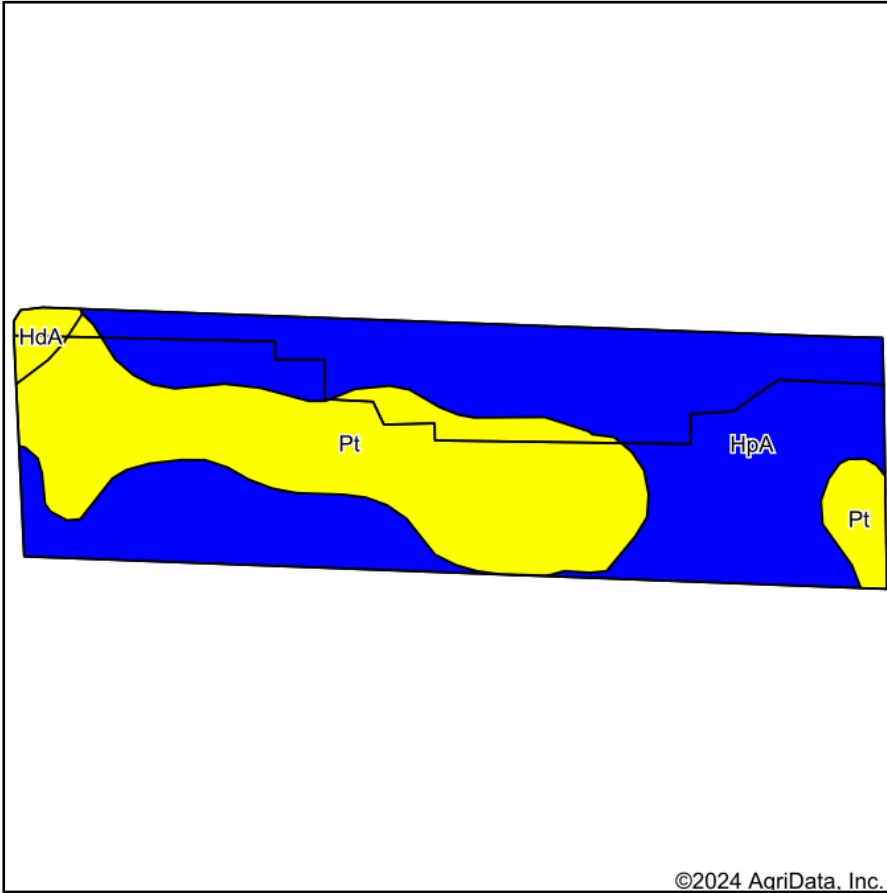
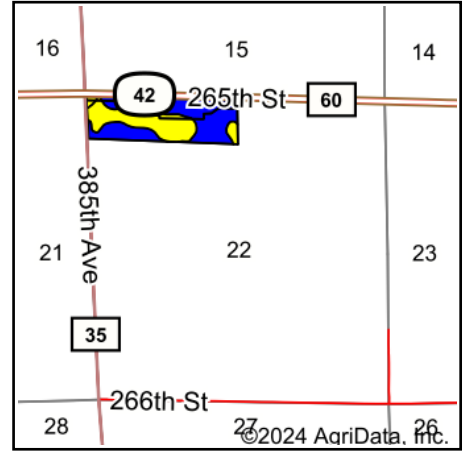


Soils Map



Soils data provided by USDA and NRCS.



State: **South Dakota**
 County: **Aurora**
 Location: **22-101N-64W**
 Township: **Truro**
 Acres: **45.76**
 Date: **4/29/2024**

Maps Provided By:



Area Symbol: SD003, Soil Area Version: 29

Code	Soil Description	Acres	Percent of field	PI Legend	Non-Irr Class *c	Productivity Index	Corn Bu	Grain sorghum Bu	Oats Bu	*n NCCPI Soybeans	
HpA	Houdek-Prosper loams, 0 to 2 percent slopes	27.89	60.9%		IIc	88				63	
Pt	Plankinton-Prosper complex	17.20	37.6%		IVw	67	22	15	22	32	
HdA	Houdek-Dudley complex, 0 to 2 percent slopes	0.67	1.5%		IIc	61				56	
Weighted Average						2.75	79.7	8.3	5.6	8.3	*n 51.2

*n: The aggregation method is "Weighted Average using all components"

*c: Using Capabilities Class Dominant Condition Aggregation Method

Soils data provided by USDA and NRCS.