

## Tract 5 Information

Tract 5 Legal Description: SW 28-106-67 and NW Exc 2.4A 28-106-67, Logan Township, Jerauld County, South Dakota.

Taxes: \$2732.94

Property Information: Tract 5 is approximately 317.6 taxable acres which consists of 288.19 acres of pasture and 20.14 acres of hayland. This Tract has 14.1% of Class IIc soil with an 84 Productivity Index on 43.61 acres and 24.28% Class IIe soils with a Productivity Index 77.5 on 76.73 acres.

Soil Productivity Index: 53.0

### PLC Yield Information

Wheat:	38
Oats:	62
Corn:	81
Grain Sorghum	56
Sunflowers	1137
Soybeans	28
Barley	34

Myron Grosz: Broker - 605-999-4087

Lanning Edwards: Broker Assoc./RE Auctioneer #352 - 605-999-1250

Justin Dean: Broker Assoc./RE Auctioneer #308 - 605-999-4239

Bill Maddocks: Broker Associate – 605-933-0246

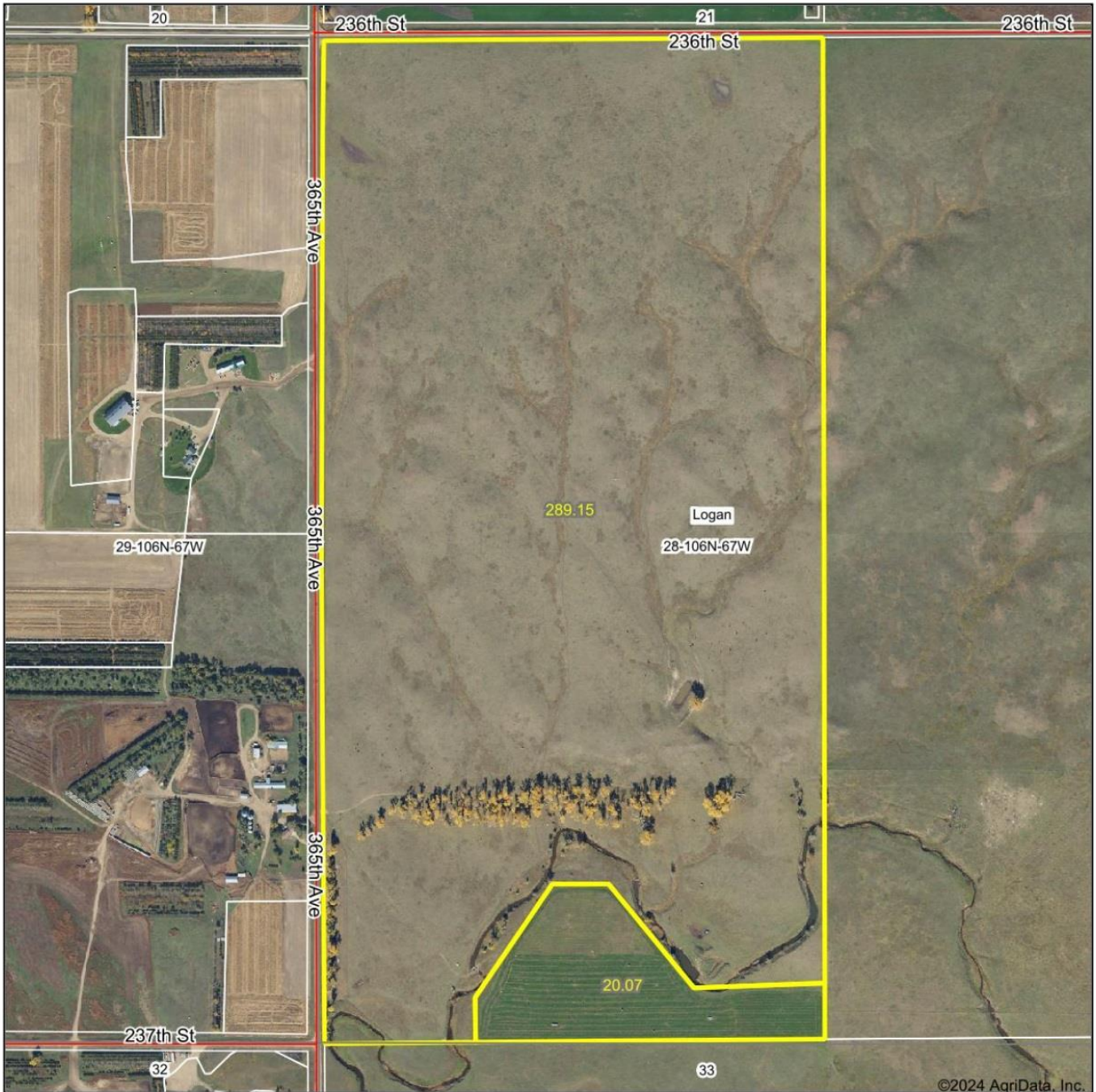
Kelbi Dean- Messmer: Broker Associate - 605-999-8812

Austin Messmer: Broker Associate - 605-353-5001

**Personal Property Auctioneers**

Steve Larson 605-770-9818

# Aerial Map



Boundary Center: 43° 57' 23.81, -98° 52' 55.96

0ft 805ft 1609ft

**28-106N-67W**  
**Jerauld County**  
**South Dakota**



Maps Provided By:

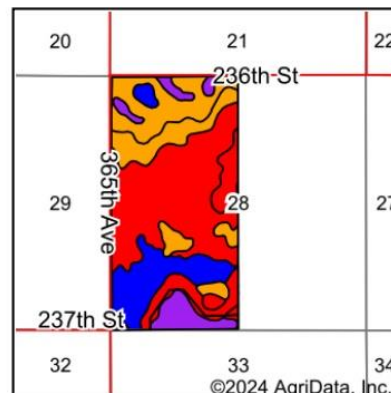
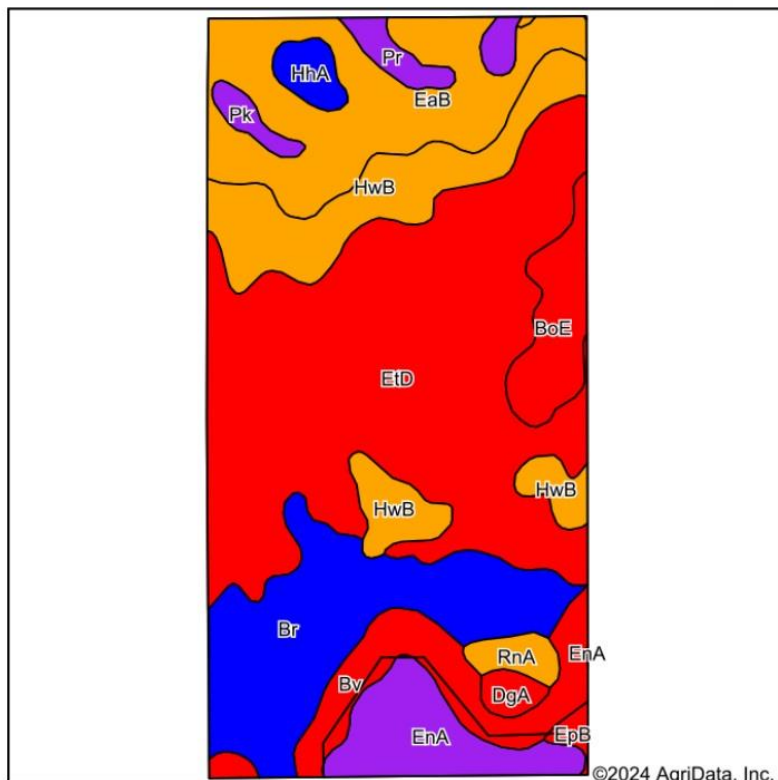


© AgriData, Inc. 2023 www.AgriDataInc.com

1/6/2024

Field borders provided by Farm Service Agency as of 5/21/2008.

## Soils Map



State: **South Dakota**  
 County: **Jerauld**  
 Location: **28-106N-67W**  
 Township: **Logan**  
 Acres: **309.22**  
 Date: **1/6/2024**

Maps Provided By:  
**surety**  
CUSTOMIZED ONLINE MAPPING  
© AgriData, Inc. 2023      www.AgriDataInc.com



Soils data provided by USDA and NRCS.

Code	Soil Description	Acres	Percent of field	PI Legend	Non-Irr Class *c	Productivity Index	Alfalfa hay Tons	Corn Bu	Grain sorghum Bu	Oats Bu	Smooth bromegrass AUM	Winter wheat Bu	*n NCCPI Soybeans	
EtD	Ethan-Betts loams, 9 to 15 percent slopes	120.72	39.0%		Vle	30							57	
Br	Bon loam, 0 to 2 percent slopes, rarely flooded	43.61	14.1%		Ilc	84							71	
EaB	Eakin-Ethan-Onita complex, 2 to 6 percent slopes	42.13	13.6%		Ile	77							49	
HwB	Houdek-Ethan-Prosper loams, 1 to 6 percent slopes	34.60	11.2%		Ile	78							61	
Bv	Bon loam, channeled, 0 to 2 percent slopes, frequently flooded	19.96	6.5%		VlW	34							35	
EnA	Enet loam, 0 to 2 percent slopes	16.51	5.3%		Ills	60							45	
BoE	Betts-Ethan loams, 15 to 40 percent slopes	12.07	3.9%		Vlle	18							11	
Pr	Plankinton-Crossplain complex	5.39	1.7%		IVw	59		20	15	20			24	
HhA	Highmore-Mobridge silt loams, 0 to 2 percent slopes	3.99	1.3%		Ilc	87							55	
RnA	Ree-Canning loams, 0 to 2 percent slopes	3.63	1.2%		Ilc	77	1.8	38	45	55	3.1	34	47	
PK	Plankinton silt loam	2.63	0.9%		IVw	56		20	15	20			21	
DgA	Delmont-Enet loams, 0 to 2 percent slopes	2.60	0.8%		IVs	50							38	
EpB	Delmont-Enet loams, 2 to 6 percent slopes	1.38	0.4%		IVe	44							36	
<b>Weighted Average</b>						<b>4.15</b>	<b>53</b>	<b>*-</b>	<b>1</b>	<b>0.9</b>	<b>1.2</b>	<b>*-</b>	<b>0.4</b>	<b>*n 53.2</b>

\*n: The aggregation method is "Weighted Average using all components"  
 \*c: Using Capabilities Class Dominant Condition Aggregation Method