

Tract 2 Information

Tract 2 Legal Description: SW 24-105-68 and the S ½ NW 24-105-68, Lyon Township, Brule County, South Dakota

2023 Taxes: \$2333.80/ Year

Property Information: Tract 2 consists of approximately 227.64 acres consisting of 140 acres of crop ground and 87.64 acres of Hayland. This Tract has 31.5% of Class IIc soil with an 86 Productivity Index and 42.4% has Class IIe soils with a 77 Productivity Index.

Soil Productivity Index: 75.4

PLC Yield Information

Wheat:	38
Oats:	62
Corn:	81
Grain Sorghum	56
Sunflowers	1137
Soybeans	28
Barley	34

Myron Grosz: Broker - 605-999-4087

Lanning Edwards: Broker Assoc./RE Auctioneer #352 - 605-999-1250

Justin Dean: Broker Assoc./RE Auctioneer #308 - 605-999-4239

Bill Maddocks: Broker Associate – 605-933-0246

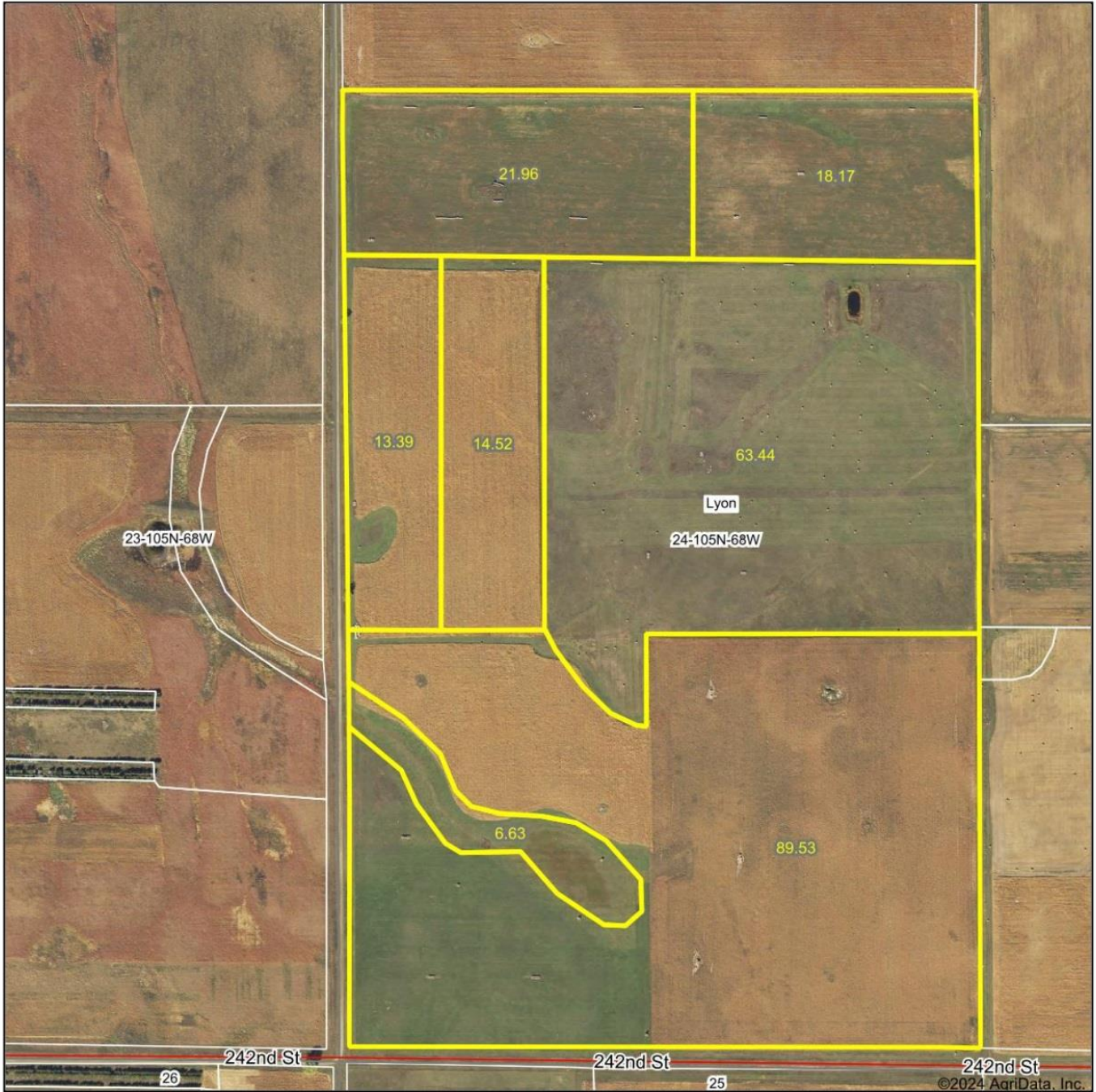
Kelbi Dean- Messmer: Broker Associate - 605-999-8812

Austin Messmer: Broker Associate - 605-353-5001

Personal Property Auctioneers

Steve Larson 605-770-9818

Aerial Map



Boundary Center: 43° 52' 58.24, -98° 56' 31.21

0ft 630ft 1259ft



24-105N-68W
Brule County
South Dakota

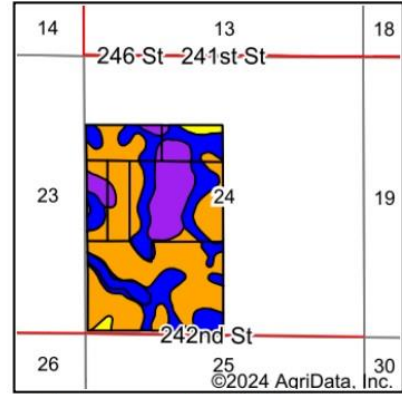
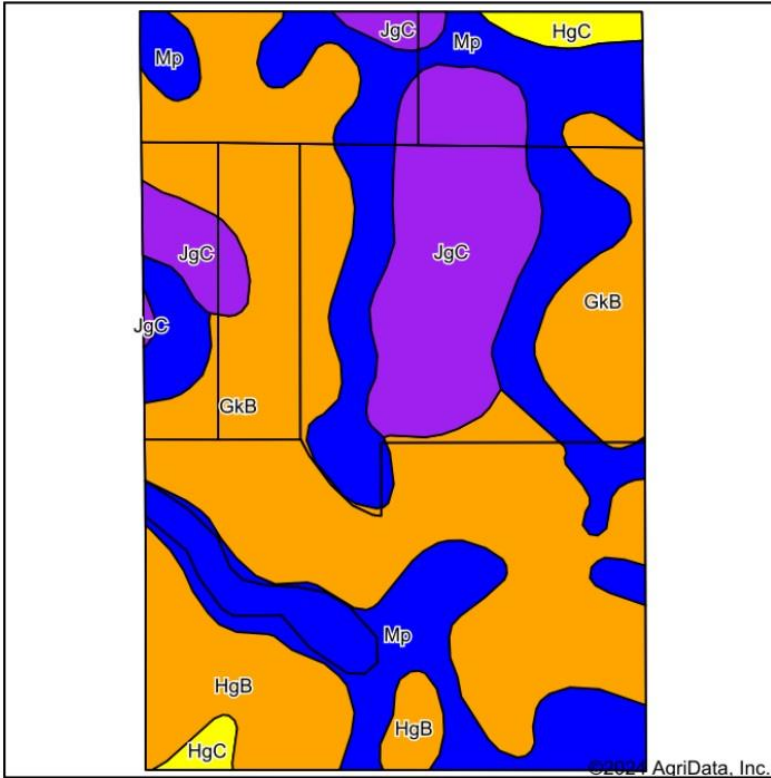
1/6/2024

Maps Provided By:

CUSTOMIZED ONLINE MAPPING
© AgriData, Inc. 2023 www.AgriDataInc.com

Field borders provided by Farm Service Agency as of 5/21/2008.

Soils Map



State: **South Dakota**
 County: **Brule**
 Location: **24-105N-68W**
 Township: **Lyon**
 Acres: **227.64**
 Date: **1/6/2024**



Soils data provided by USDA and NRCS.

Area Symbol: SD603, Soil Area Version: 27

Code	Soil Description	Acres	Percent of field	PI Legend	Non-Irr Class *c	Productivity Index	Alfalfa hay Tons	Bromegrass alfalfa AUM	Corn Bu	Grain sorghum Bu	Oats Bu	Spring wheat Bu	Winter wheat Bu	*n NCCPI Soybeans	
GkB	Glenham-Java-Prosper loams, 1 to 6 percent slopes	96.48	42.4%		Ile	77								51	
Mp	Mobridge-Plankinton silt loams	71.74	31.5%		IIc	86	3	5	64	70	70	33	45	50	
JgC	Java-Glenham loams, 6 to 9 percent slopes	35.57	15.6%		IVe	51	1.5	2.5	22	22	37	17		44	
HgB	Highmore-Java complex, 1 to 5 percent slopes	19.53	8.6%		Ile	76	2.7	4.5	53	57	61		33	51	
HgC	Highmore-Java complex, 5 to 9 percent slopes	4.32	1.9%		IVe	64	2.3	3.8	44	49	56		28	50	
Weighted Average						2.35	75.4	1.5	2.4	29	31.3	34.1	13.1	17.5	*n 49.6

*n: The aggregation method is "Weighted Average using all components"

*c: Using Capabilities Class Dominant Condition Aggregation Method

Soils data provided by USDA and NRCS.