

Tract 1 Information

Tract 1 Legal Description: SE4 less the E 600' of the N 1188' 24-105-68, Lyon Township, Brule County, South Dakota

2023 Taxes: \$1800.10/year

Property Information: Tract 1 consists of approximately 139 taxable acres consisting of 126.25 acres of crop ground and 13 acres of Grassland. This Tract has 36% of Class IIc soil with an 86 Productivity Index and 42.9% has Class IIe soils with a 77 Productivity Index.

Soil Productivity Index: 75.4

PLC Yield Information

| | |
|---------------|------|
| Wheat: | 38 |
| Oats: | 62 |
| Corn: | 81 |
| Grain Sorghum | 56 |
| Sunflowers | 1137 |
| Soybeans | 28 |
| Barley | 34 |

Myron Grosz: Broker - 605-999-4087

Lanning Edwards: Broker Assoc./RE Auctioneer #352 - 605-999-1250

Justin Dean: Broker Assoc./RE Auctioneer #308 - 605-999-4239

Bill Maddocks: Broker Associate – 605-933-0246

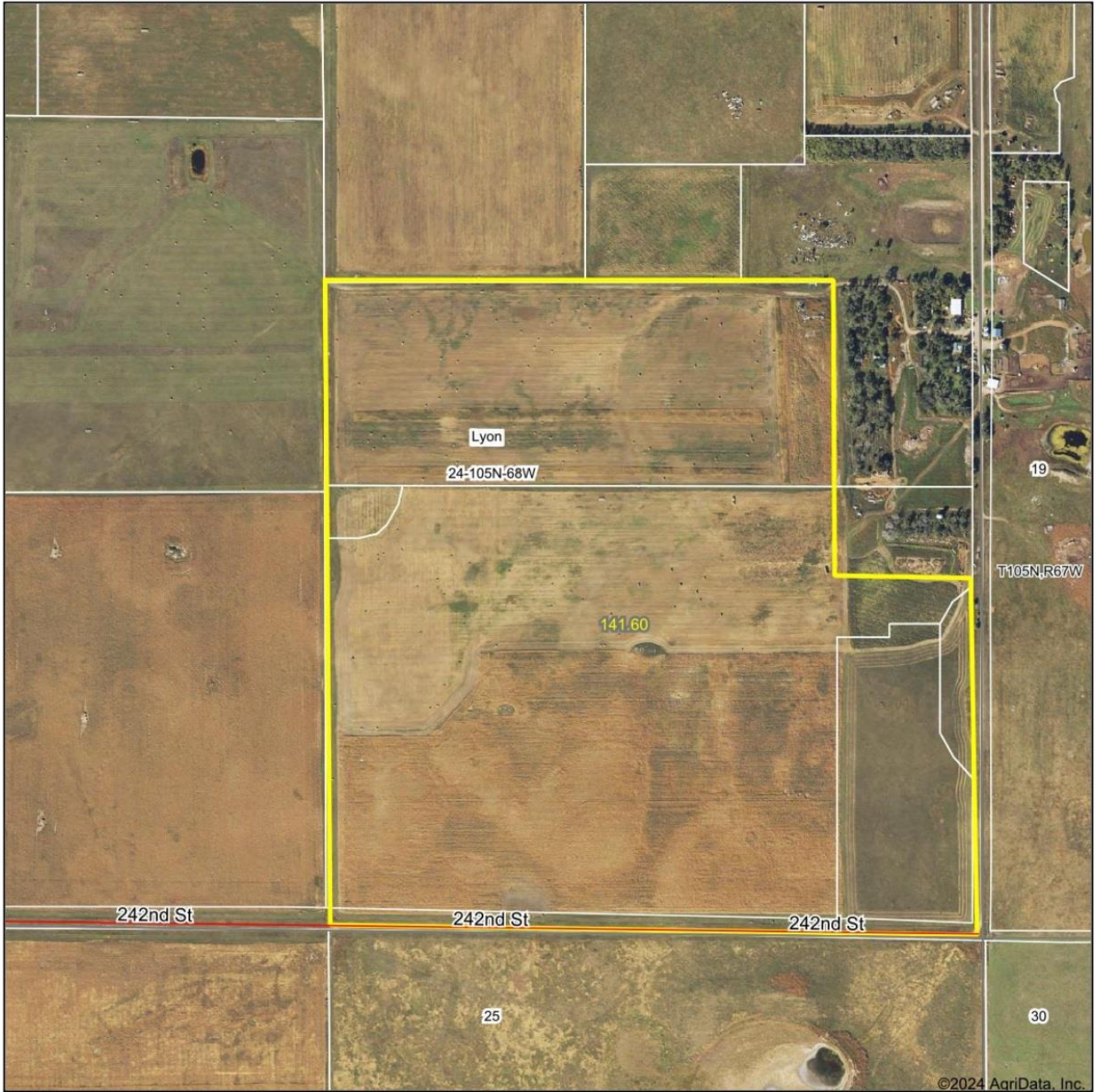
Kelbi Dean- Messmer: Broker Associate - 605-999-8812

Austin Messmer: Broker Associate - 605-353-5001

Personal Property Auctioneers

Steve Larson 605-770-9818

Aerial Map



Boundary Center: 43° 52' 51.03, -98° 55' 55.63

0ft 628ft 1255ft

Maps Provided By:

CUSTOMIZED ONLINE MAPPING
© AgriData, Inc. 2023 www.AgriDataInc.com

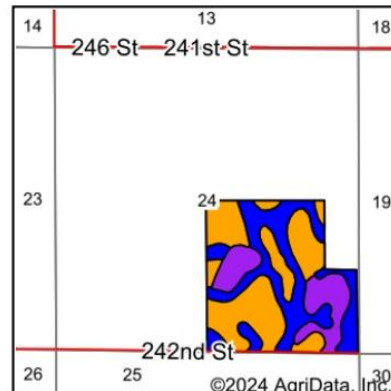
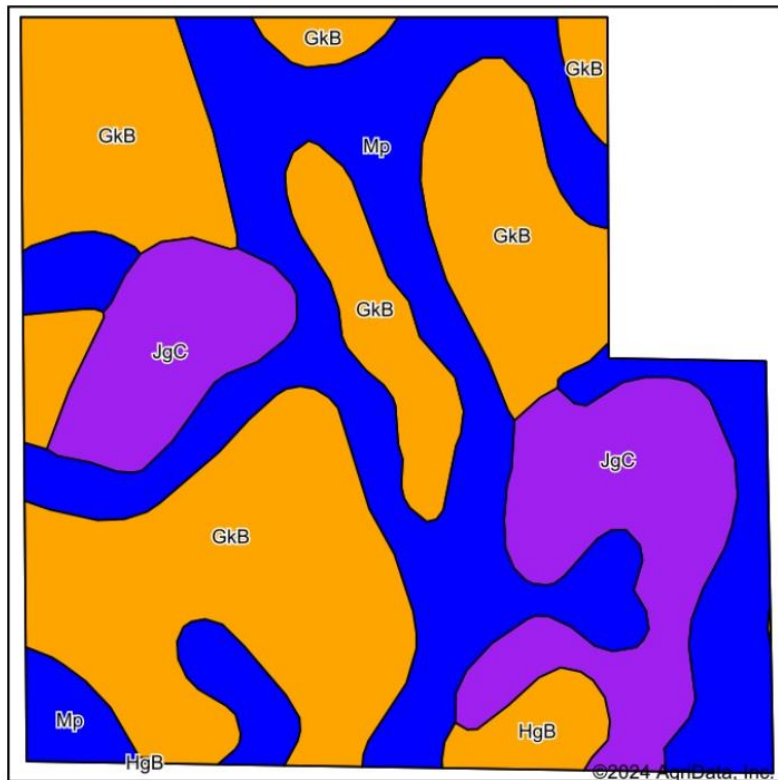
24-105N-68W
Brule County
South Dakota



1/6/2024

Field borders provided by Farm Service Agency as of 5/21/2008.

Soils Map



State: **South Dakota**
 County: **Brule**
 Location: **24-105N-68W**
 Township: **Lyon**
 Acres: **141.6**
 Date: **1/6/2024**



Soils data provided by USDA and NRCS.

Area Symbol: SD603, Soil Area Version: 27

| Code | Soil Description | Acres | Percent of field | PI Legend | Non-Irr Class *c | Productivity Index | Alfalfa hay Tons | Bromegrass alfalfa AUM | Corn Bu | Grain sorghum Bu | Oats Bu | Spring wheat Bu | Winter wheat Bu | *n NCCPI Soybeans | |
|-------------------------|---|-------|------------------|-----------|------------------|--------------------|------------------|------------------------|------------|------------------|-------------|-----------------|-----------------|-------------------|----------------|
| GkB | Glenham-Java-Prosper loams, 1 to 6 percent slopes | 60.70 | 42.9% | | Ile | 77 | | | | | | | | 51 | |
| Mp | Mobridge-Plankinton silt loams | 51.33 | 36.2% | | IIc | 86 | 3 | 5 | 64 | 70 | 70 | 33 | 45 | 50 | |
| JgC | Java-Glenham loams, 6 to 9 percent slopes | 26.35 | 18.6% | | IVe | 51 | 1.5 | 2.5 | 22 | 22 | 37 | 17 | | 44 | |
| HgB | Highmore-Java complex, 1 to 5 percent slopes | 3.22 | 2.3% | | Ile | 76 | 2.7 | 4.5 | 53 | 57 | 61 | | 33 | 51 | |
| Weighted Average | | | | | | 2.37 | 75.4 | 1.4 | 2.4 | 28.5 | 30.8 | 33.6 | 15.1 | 17.1 | *n 49.3 |

*n: The aggregation method is "Weighted Average using all components"
 *c: Using Capabilities Class Dominant Condition Aggregation Method

Soils data provided by USDA and NRCS.